



NT pouch & release in rearing house



Placing near mountages

Placing NT pouches on manure pit



Packing litter in plastic bags



Burning of litter

CSRTI, Mysore can supply NT pouches by courier on receipt of advance payment towards the cost of NT pouches and courier charges.

Text

Vinod Kumar & J. B. Narendra Kumar

**For further details Contact:**

**DIRECTOR**

Central Sericultural Research & Training Institute  
(ISO 9001 : 2008 Certified)

Central Silk Board, Min. of Textiles  
Govt. of India, Srirampura, Mysuru - 570 008

Tel: 0821-2362757, 2362406

Fax: 0821-2362845

Web: [www.csrtimys.res.in](http://www.csrtimys.res.in)

Email: [csrtimys.csb@nic.in](mailto:csrtimys.csb@nic.in)

# IPM OF UZI FLY, EXORISTA BOMBYCIS A SERIOUS PEST OF SILKWORM



Separated mulberry twigs

uzi pupae in litter



**Central Sericultural Research & Training Institute**

(ISO 9001 : 2008 Certified)

Central Silk Board, Min. of Textiles

Govt. of India, Srirampura

Mysuru-570 008

## IPM of Uzi fly *Exorista bombycis*



Uzi fly is an endo-larval parasitoid of the silkworm, *Bombyx mori*, inflicting 5-15% loss to the silkworm crop in the premier silk producing states.

**Period of occurrence:** Occurs throughout the year, but maximum infestation during rainy season

**Symptoms:** Presence of black scar on the silkworm body and a circular hole at the tip of the cocoon are the typical symptoms of uzi fly attack.



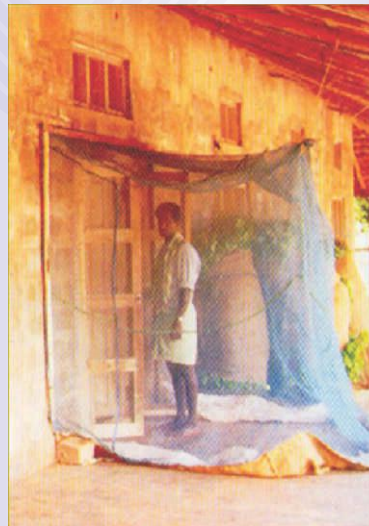
### Life cycle

Fecundity	: 400 – 500 eggs
Hatching	: 2-3 days
Larval duration	: 6-8 days
Pupal duration	: 10 – 12 days
Adult longevity	: 12-20 days
Completes life cycle in	18-22 days

## Management

### Exclusion method

- Fix wire mesh/nylon net on all doors and windows
- Fit doors with automatic closing mechanism
- Provide ante-chamber at the entrance of the rearing house.



### Uzi trap

Uzi trap kills both the sexes of uzi fly. Dissolve one tablet in 1 litre of water and keep the solution in white trays both inside and out side the rearing house at window base from brushing onwards up to spinning.



Place uzi traps inside the rearing house/ mounting hall after spinning up to 20 days under close-door condition to trap uzi flies emerging inside.

### Biological method

- *Nesolynx thymus* is an ecto-pupal parasitoid of uzi fly. About 40-60 parasitoids develop on each uzi pupa
- *N. thymus* is produced on house fly pupa. 50 ml of parasitized pupae are packed in a nylon net pouch (Rs.50/pouch). About 10,000 NT adults emerge from each pouch
- Release *N. thymus* between 3<sup>rd</sup> – 5<sup>th</sup> day of V instar @2 pouches/100 dfls
- After mounting of spinning worms, transfer the same near mountages
- After harvesting of cocoons, keep the same pouches near manure pit.

